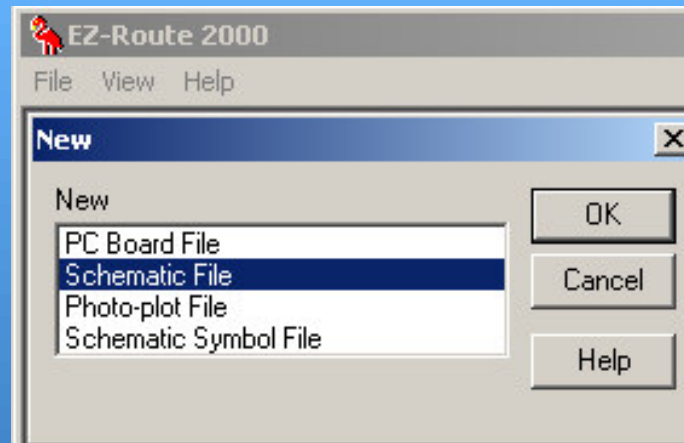
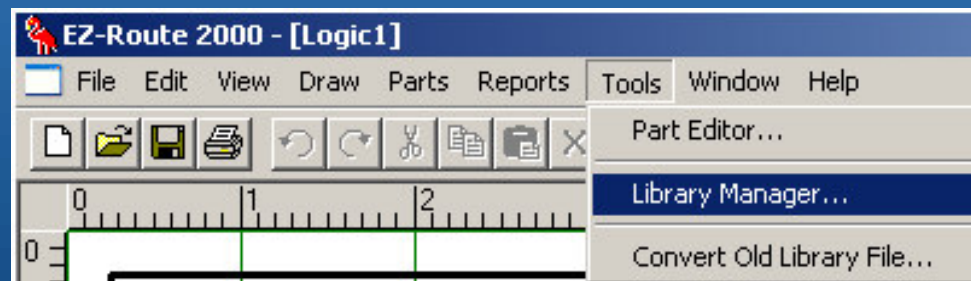


How to print libraries



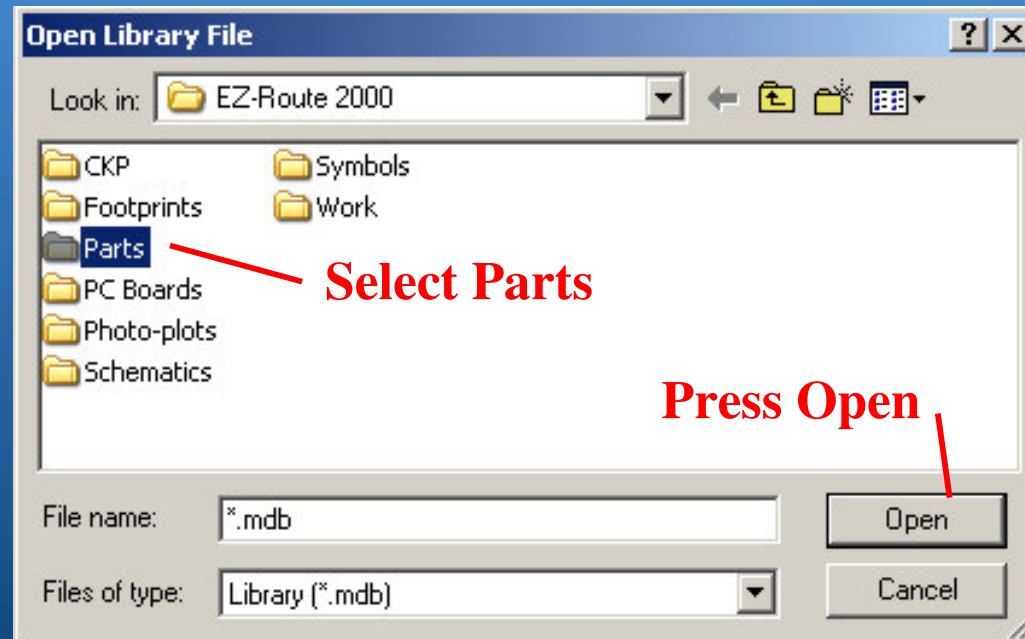
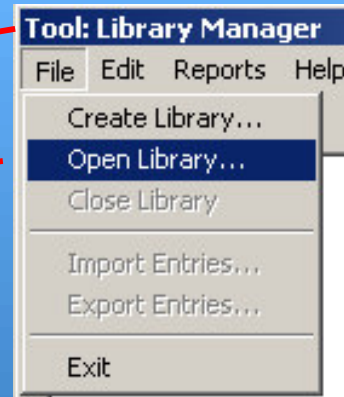
**Start EZ-Route2000's
Schematic Editor**



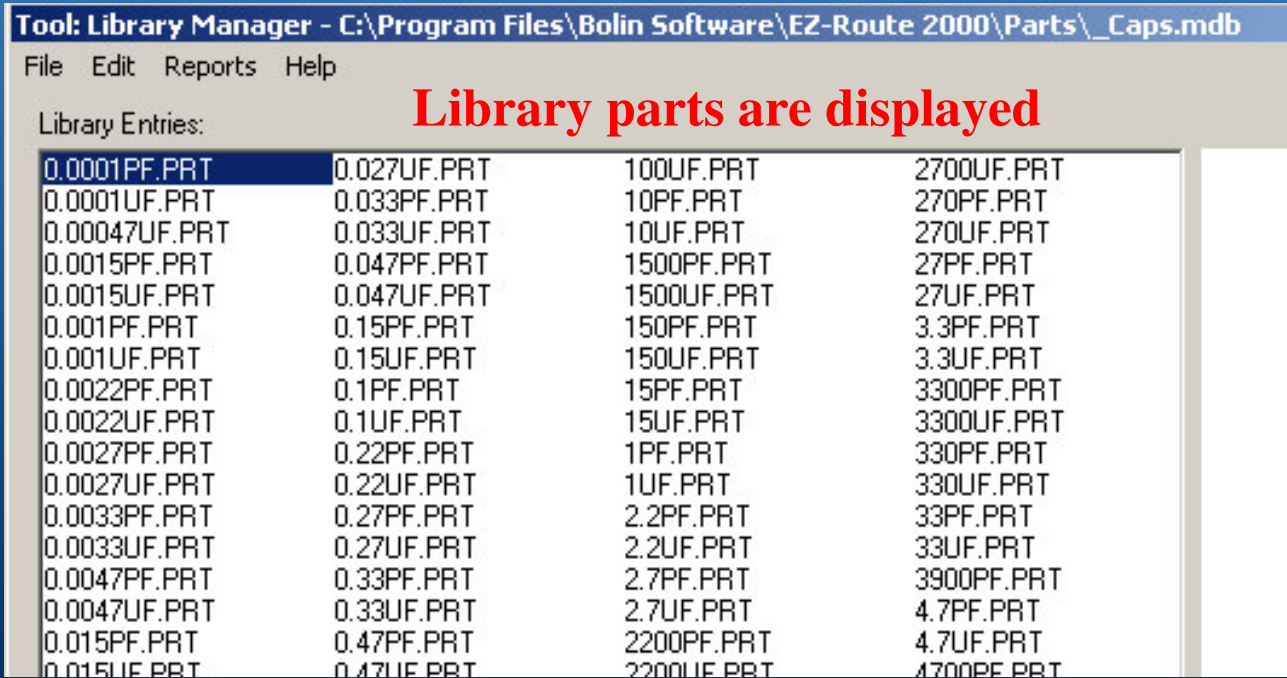
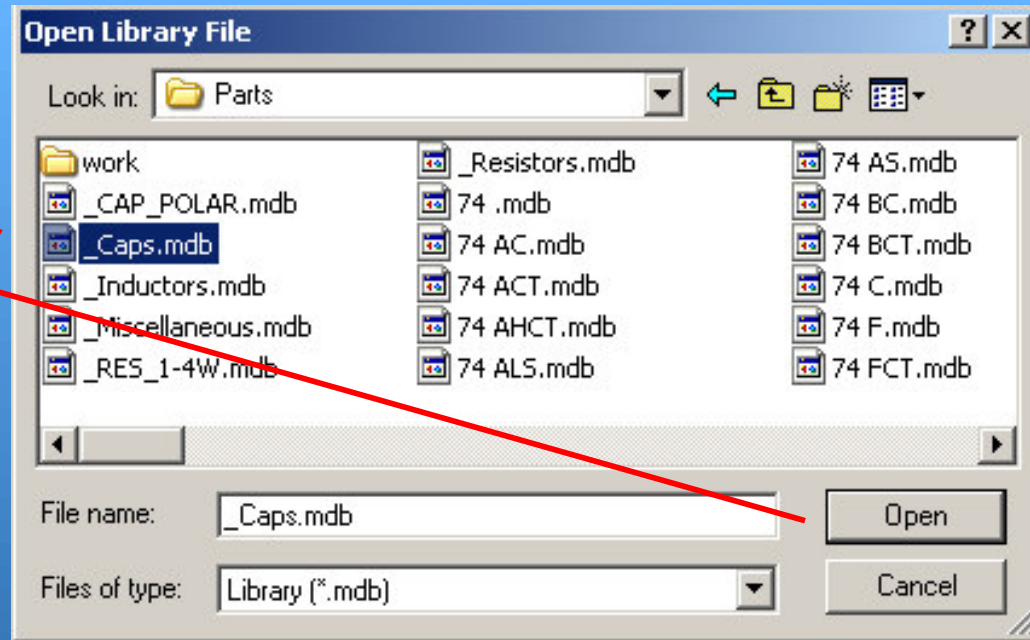
Select TOOLS then Library Manager

In Library Manager,

Click **Open Library**

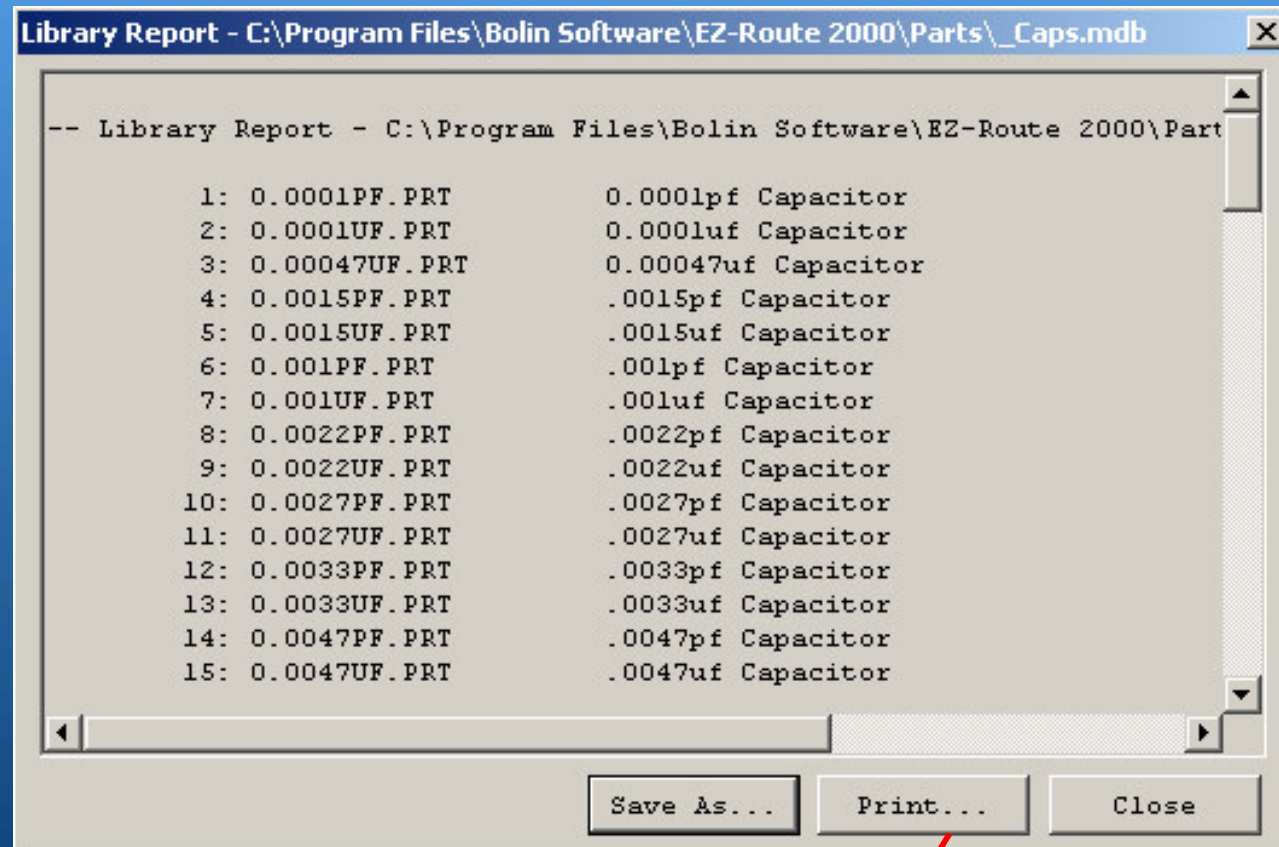
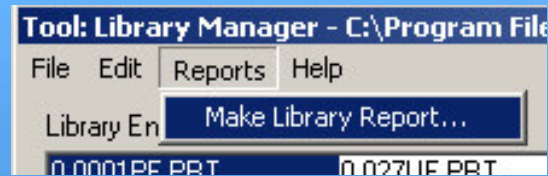


Select desired Library,
press Open

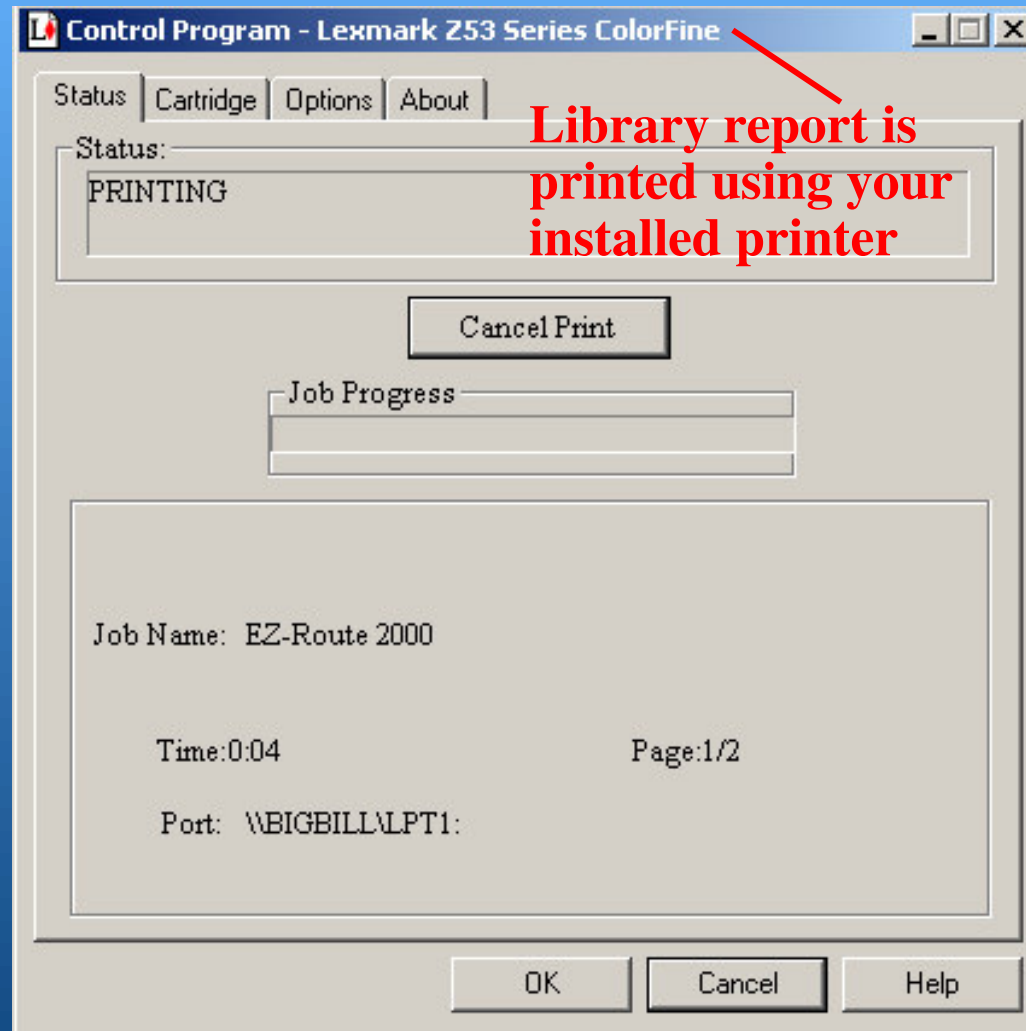


Select Reports,

then Make Library Report

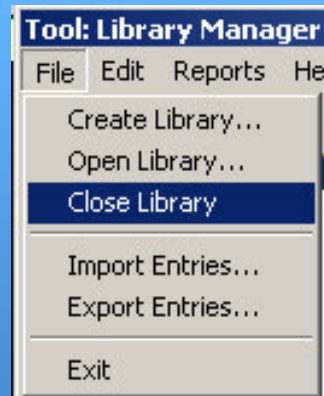


Press Print



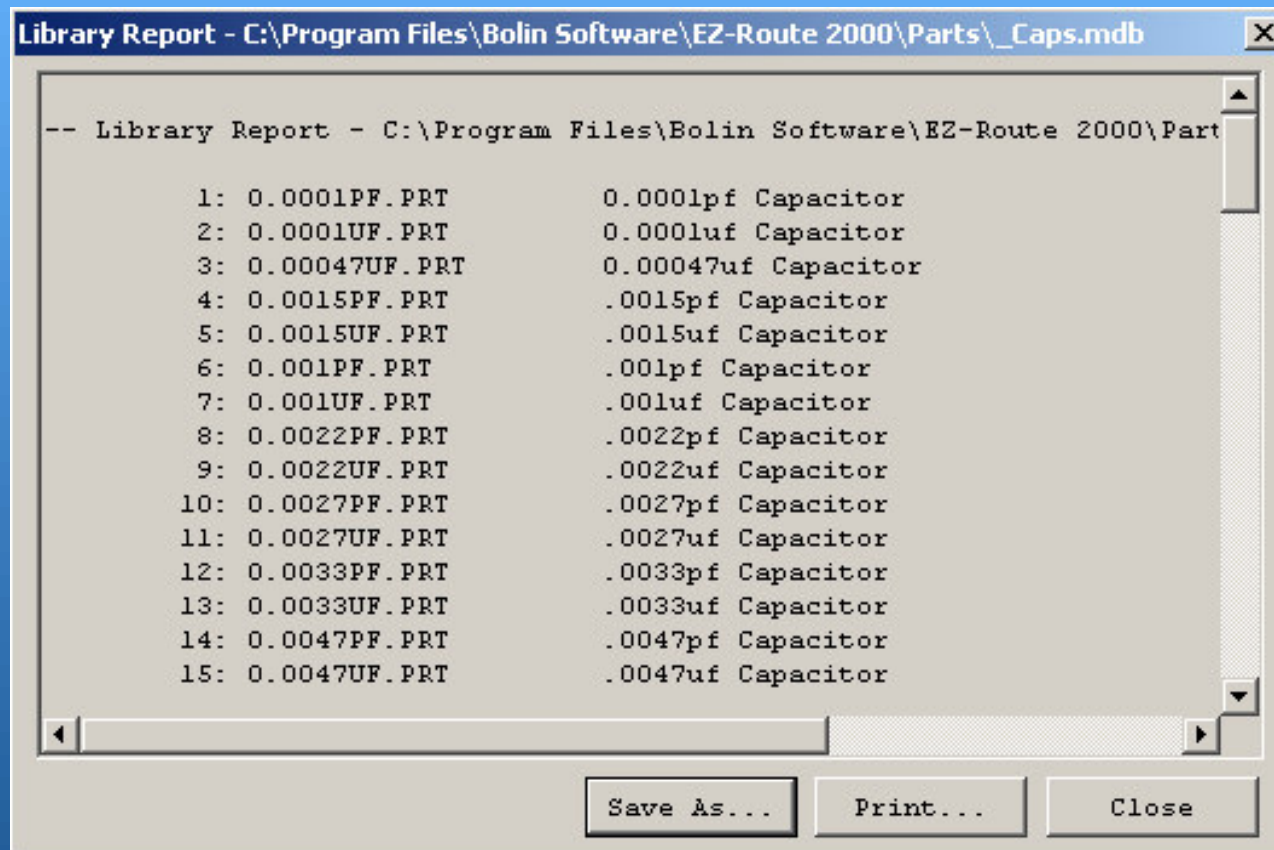
When finished, in File, select
Close Library

**This is important. If not
closed correctly you may
corrupt the parts library
requiring you to reinstall it.**

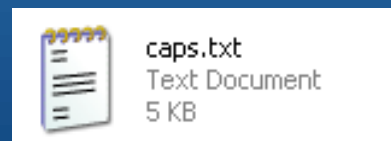
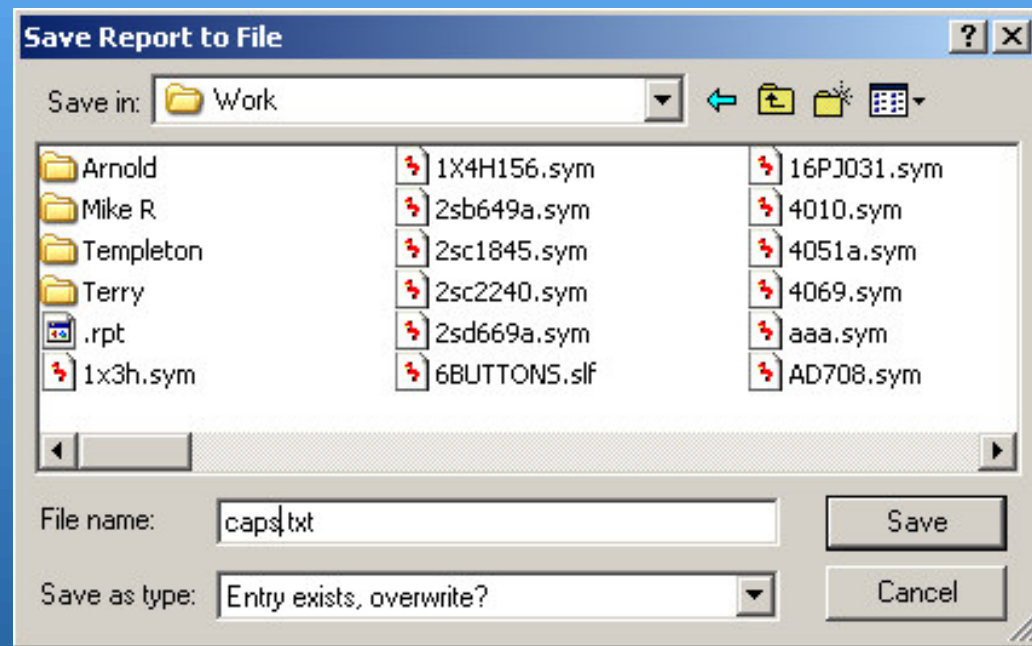


If you want to print the entire library, it will normally be
printed on one side and the stack will be 4" thick.

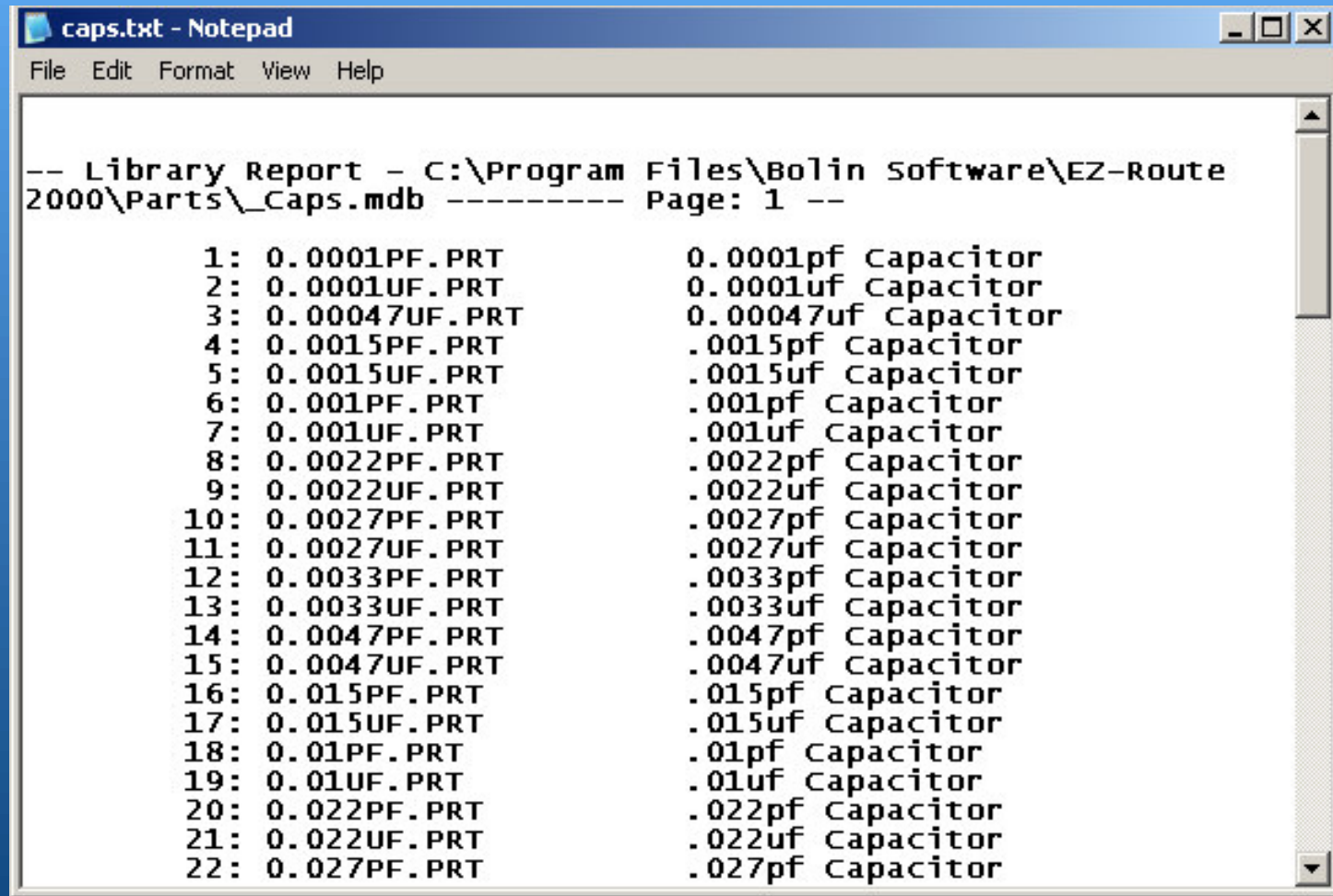
The next set of slides, show a printing program I use to
make these books.



I use a special printing program called ClickBook. In Library Reports, select Save As. Save the library in a temp folder.



**Search for and
double click Caps.txt**

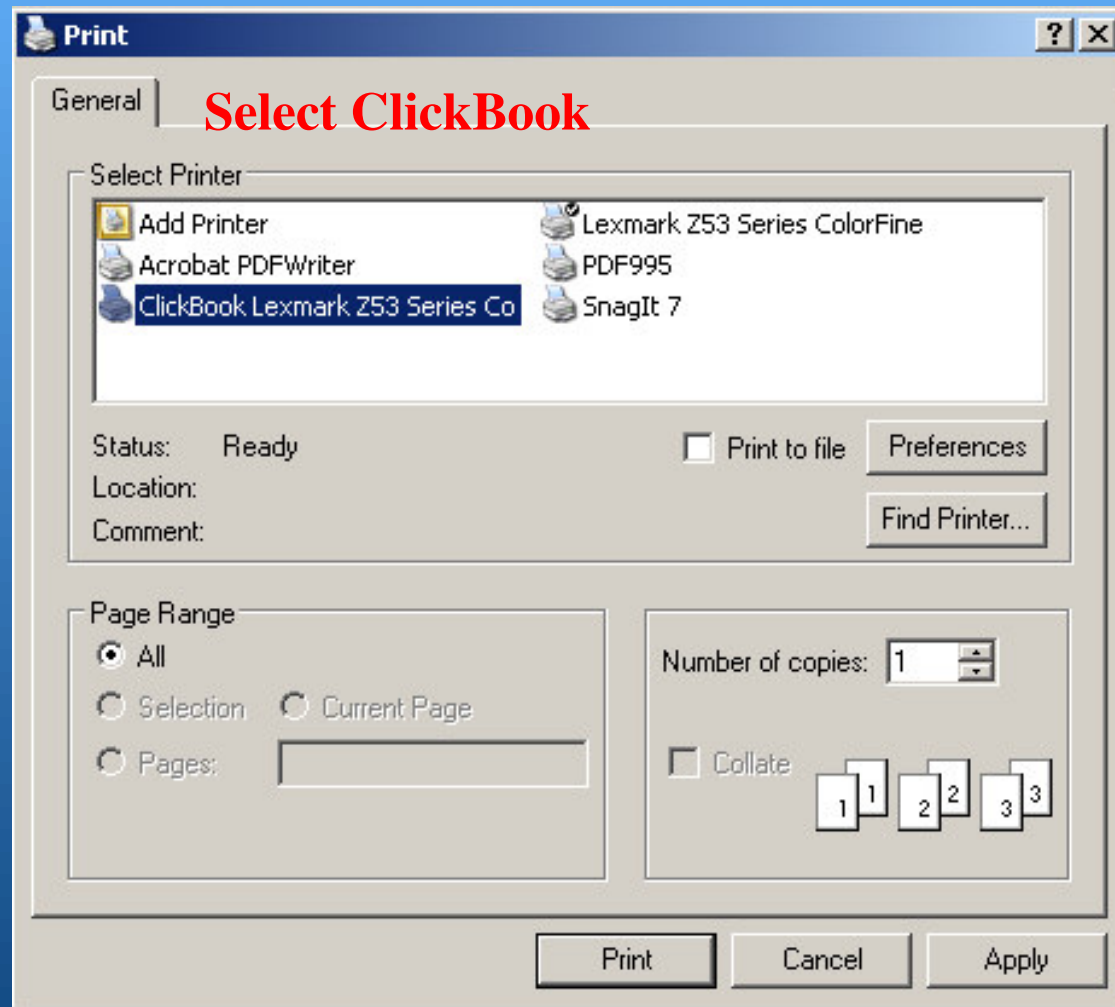


```
caps.txt - Notepad
File Edit Format View Help

-- Library Report - C:\Program Files\Bolin Software\EZ-Route
2000\Parts\_Caps.mdb ----- Page: 1 --

  1: 0.0001PF.PRT          0.0001pf Capacitor
  2: 0.0001UF.PRT          0.0001uf Capacitor
  3: 0.00047UF.PRT         0.00047uf Capacitor
  4: 0.0015PF.PRT          .0015pf Capacitor
  5: 0.0015UF.PRT          .0015uf Capacitor
  6: 0.001PF.PRT           .001pf Capacitor
  7: 0.001UF.PRT           .001uf Capacitor
  8: 0.0022PF.PRT          .0022pf Capacitor
  9: 0.0022UF.PRT          .0022uf Capacitor
 10: 0.0027PF.PRT          .0027pf Capacitor
 11: 0.0027UF.PRT          .0027uf Capacitor
 12: 0.0033PF.PRT          .0033pf Capacitor
 13: 0.0033UF.PRT          .0033uf Capacitor
 14: 0.0047PF.PRT          .0047pf Capacitor
 15: 0.0047UF.PRT          .0047uf Capacitor
 16: 0.015PF.PRT           .015pf Capacitor
 17: 0.015UF.PRT           .015uf Capacitor
 18: 0.01PF.PRT            .01pf Capacitor
 19: 0.01UF.PRT            .01uf Capacitor
 20: 0.022PF.PRT           .022pf Capacitor
 21: 0.022UF.PRT           .022uf Capacitor
 22: 0.027PF.PRT           .027pf Capacitor
```

In FILE select Print

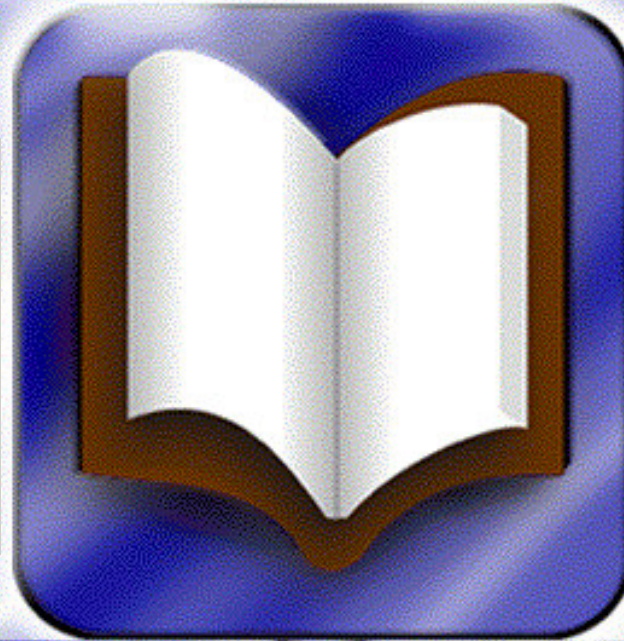


ClickBook



Copyright © 1995-2001 Blue Squirrel.

686 E. 8400 South
Sandy, Utah 84070
(801) 352-1551 Sales: 1-800-403-0925
E-mail: sales@bluesquirrel.com
WWW: <http://www.bluesquirrel.com>



B L U E  S Q U I R R E L

Untitled - ClickBook

File Layouts View Tools Help

Open Save Print Options Temp + Page Help Layout? Template About

Print Status

Printer : Lexmark Z53 Series ColorFine

All Pages Received : 2 Pages

Print Range

All Pages:

Enter page numbers and/or page ranges separated by commas. Example: 1,3,5-12

Apply

Print Jobs

Title	Pages
<input checked="" type="checkbox"/> caps.txt - Notepad	2

Print

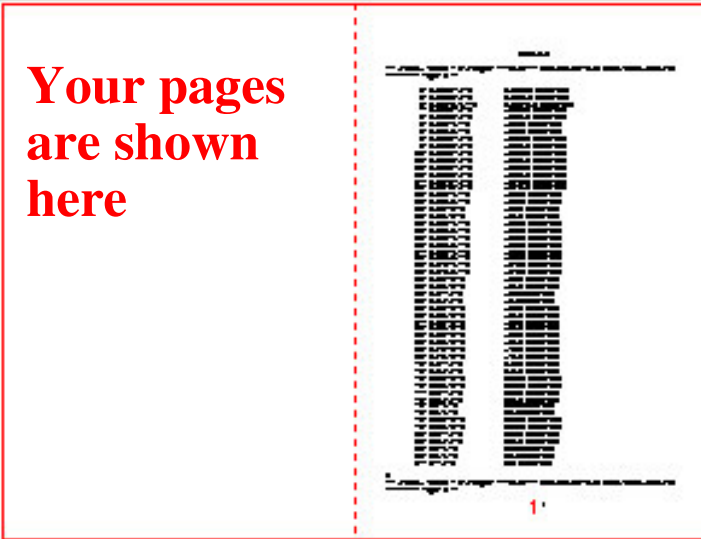
Num of copies:

Front

Back

Sheet Selection

Your pages are shown here



Sheet #1 (front)

Categories: All

Layouts: Side-By-Side (folded)

Follow the paper moving instructions for your printer and your new book is printed. You will need to buy a extra long stapler so you can finish the book.

I hope this has been helpful. Please email me if you need more information on this or for other operations.

**Thank you
Bill Jenkins
wrj60@telus.net**