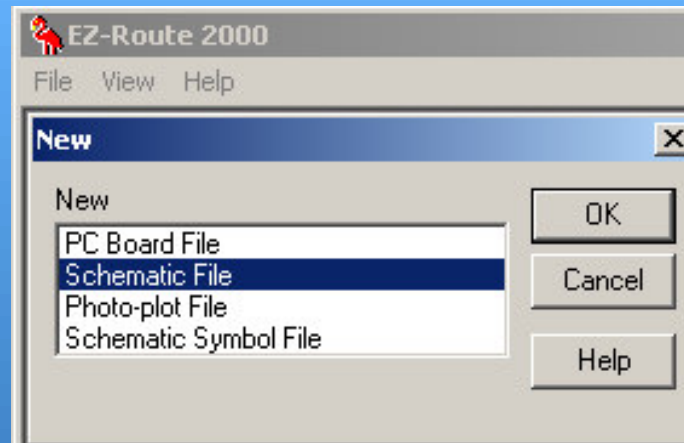
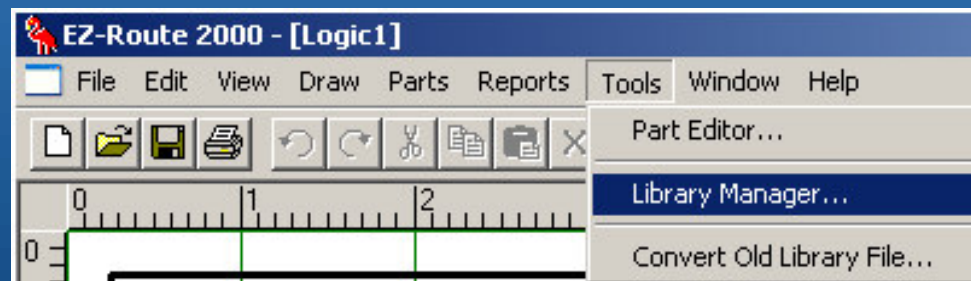


# How to print libraries

---



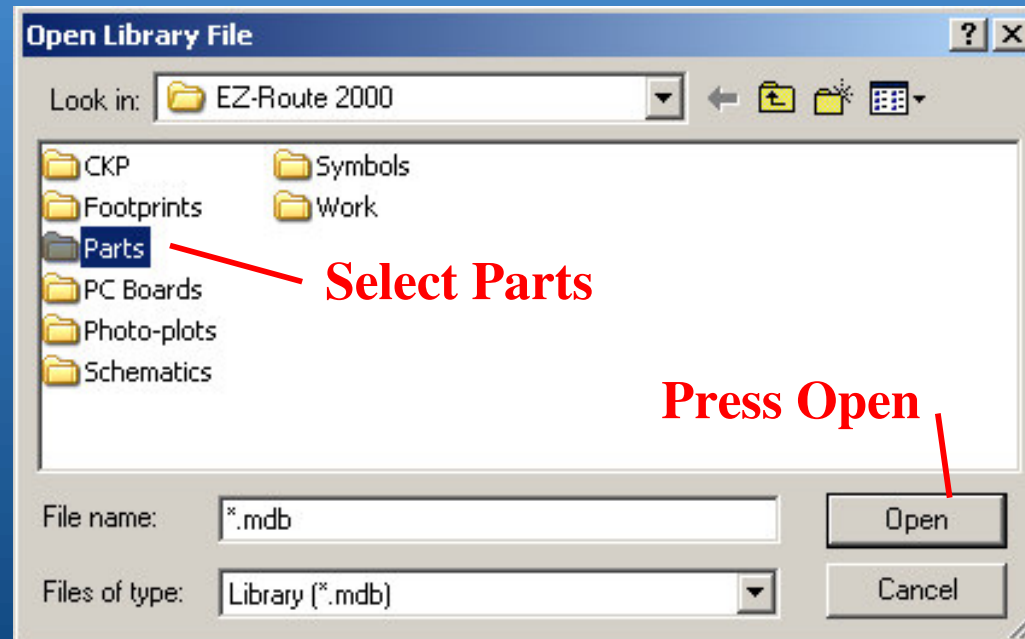
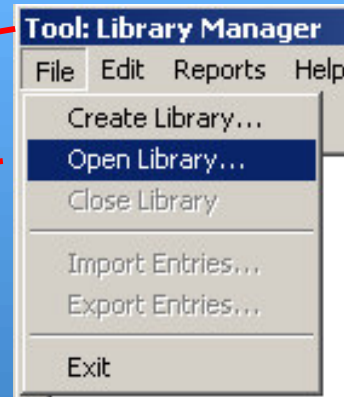
**Start EZ-Route2000's  
Schematic Editor**



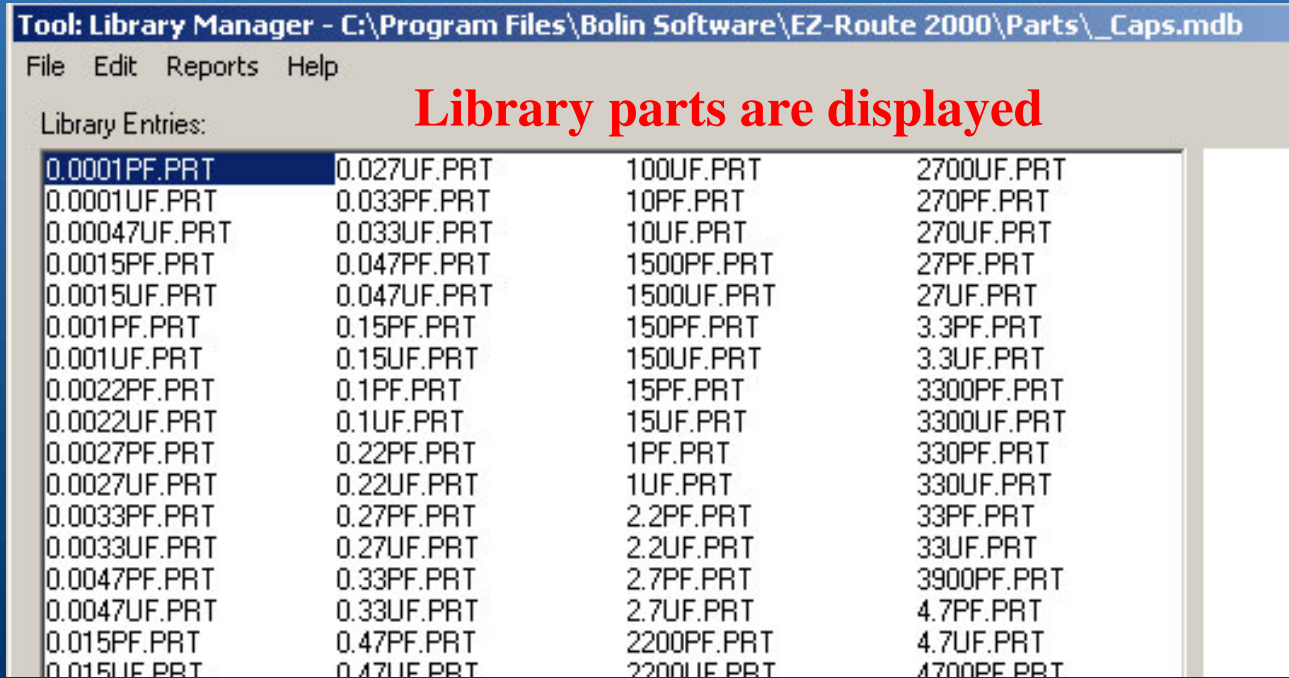
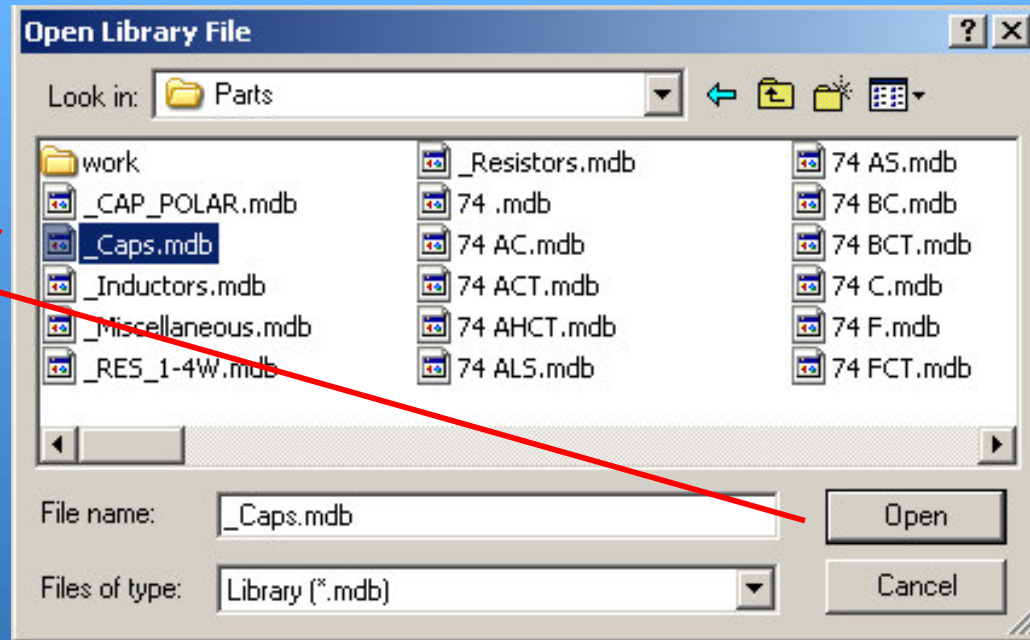
**Select TOOLS then Library Manager**

In Library Manager,

Click **Open Library**

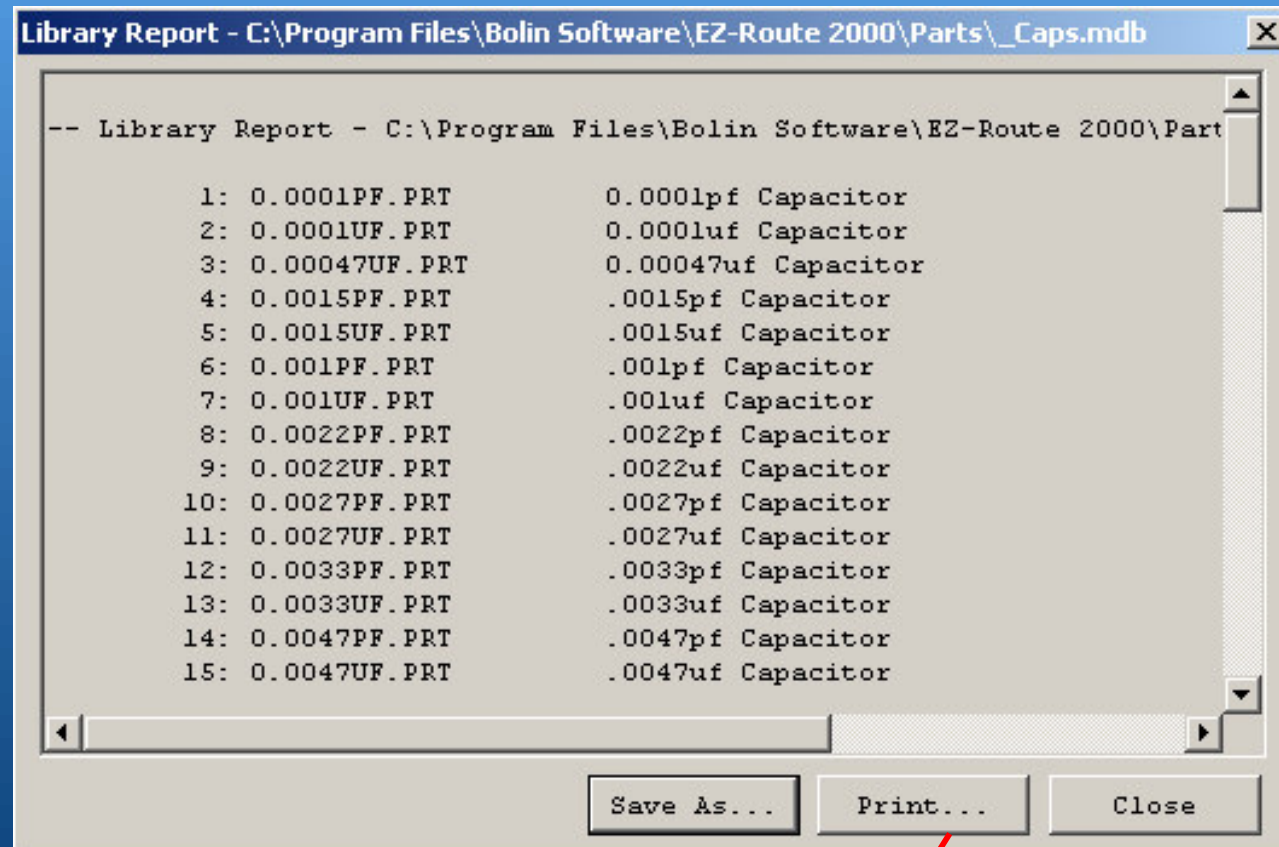


Select desired Library,  
press Open

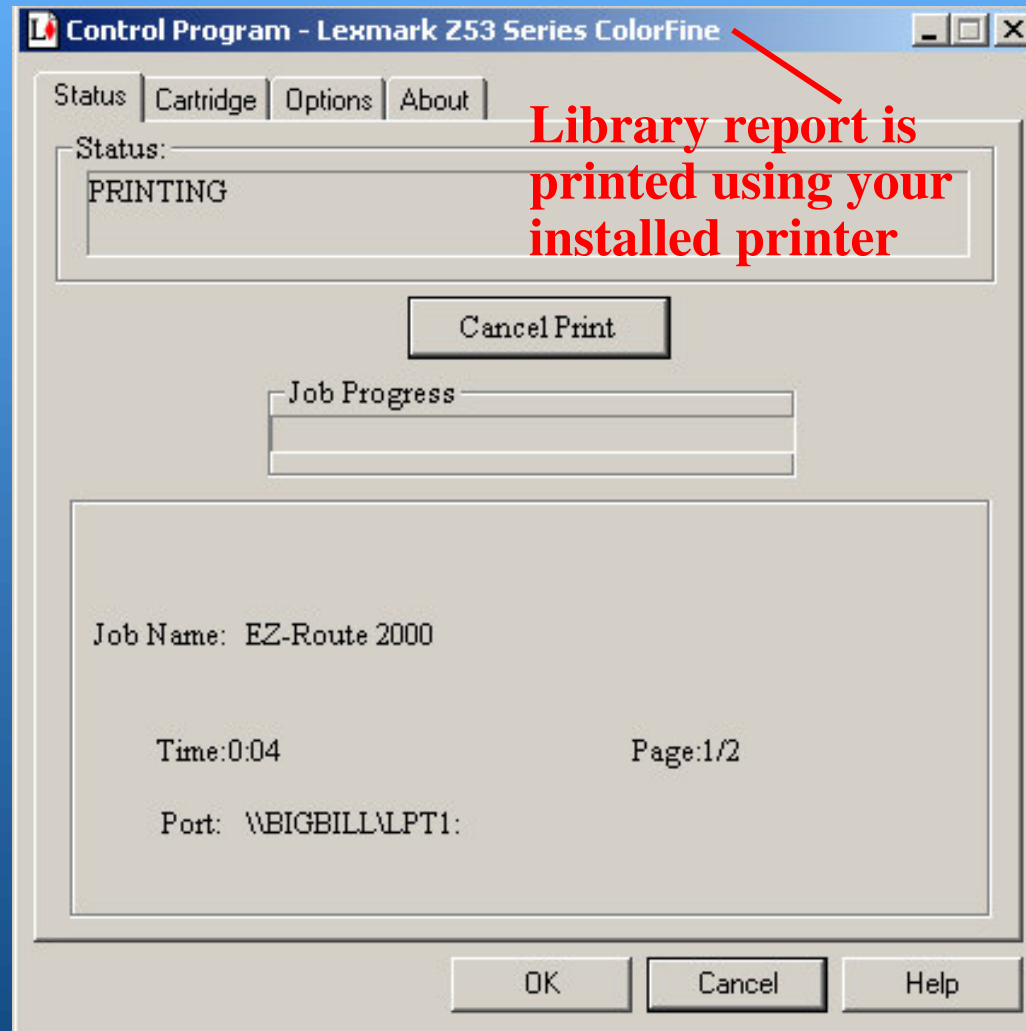


Select Reports,

then Make Library Report

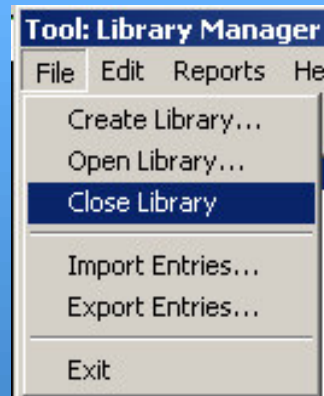


Press Print



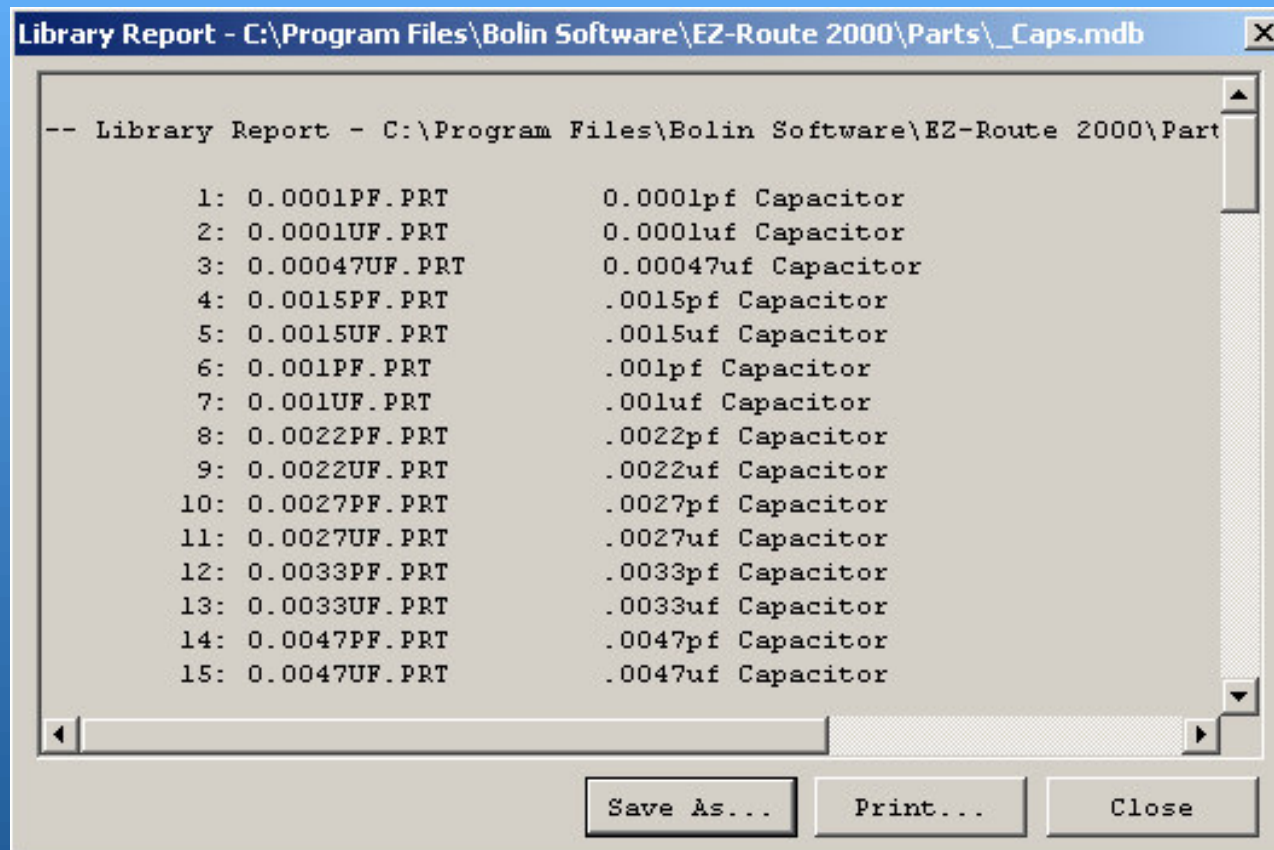
When finished, in File, select  
Close Library

**This is important. If not  
closed correctly you may  
corrupt the parts library  
requiring you to reinstall it.**



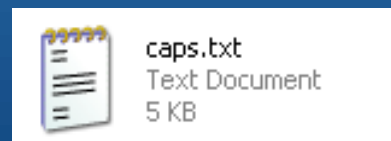
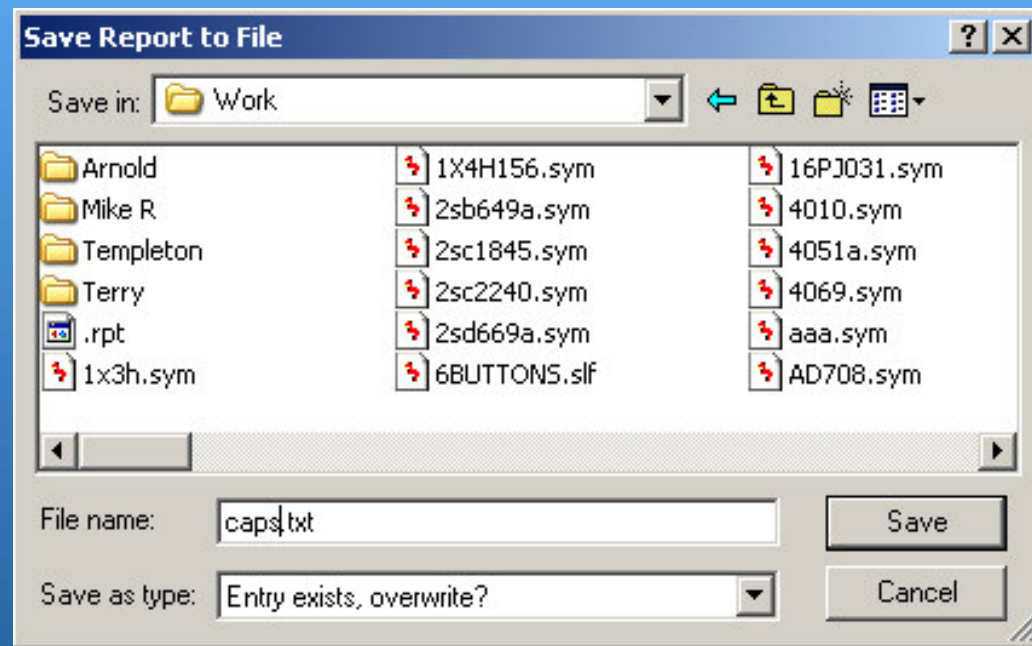
If you want to print the entire library, it will normally be  
printed on one side and the stack will be 4" thick.

The next set of slides, show a printing program I use to  
make these books.

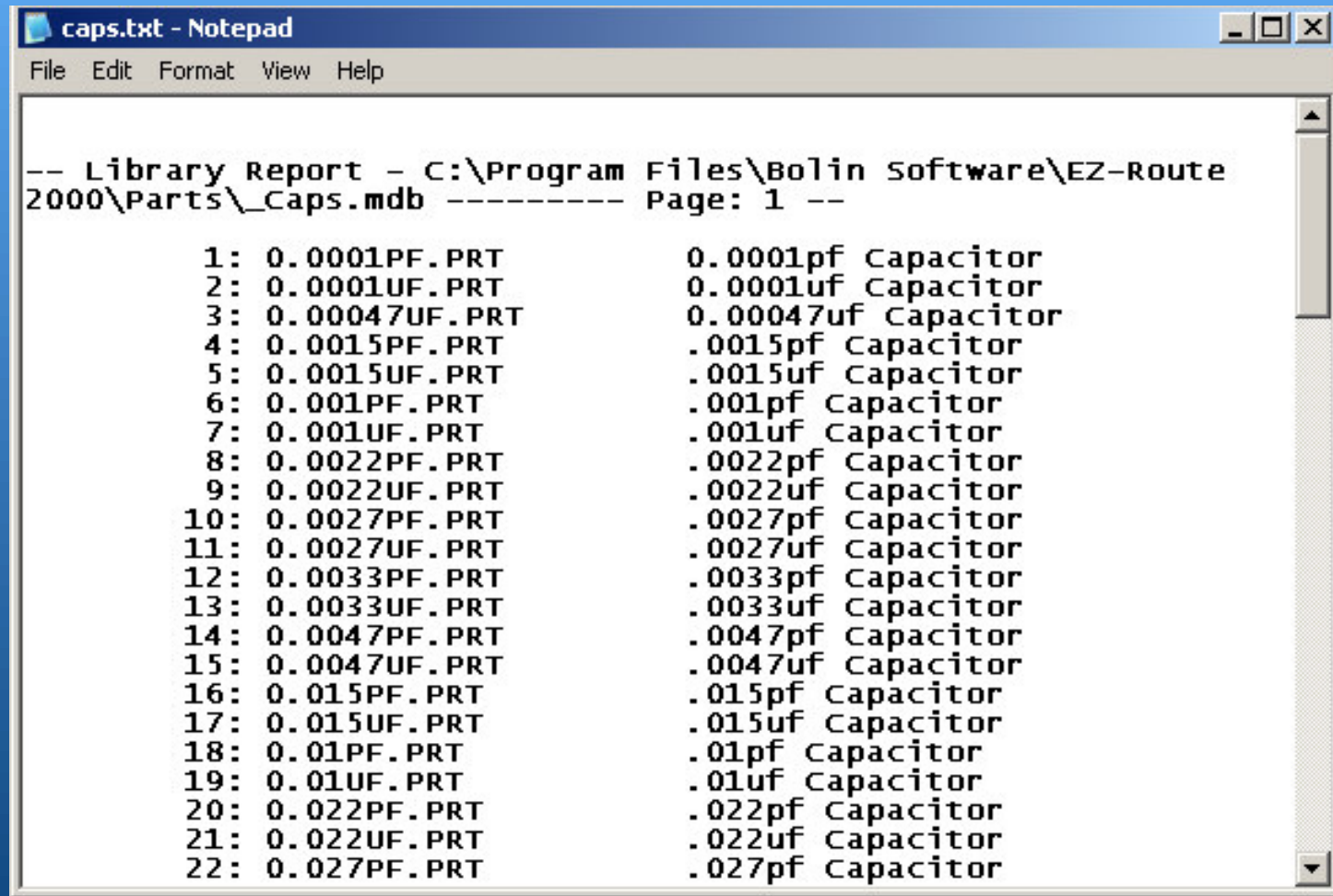


**I use a special printing program called ClickBook. In Library Reports, select Save As. Save the library in a temp folder.**





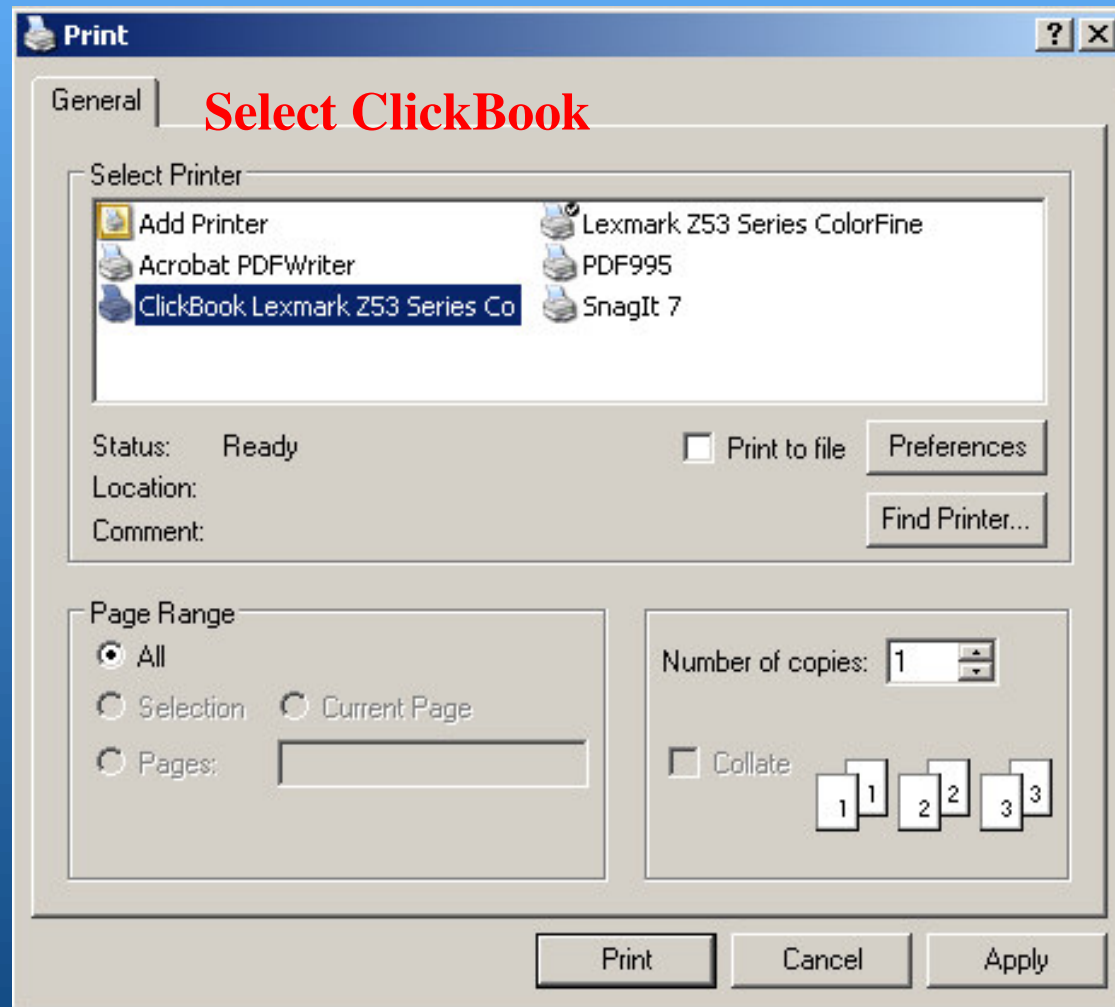
**Search for and  
double click Caps.txt**



The screenshot shows a Notepad window with the following text:

```
-- Library Report - C:\Program Files\Bolin Software\EZ-Route  
2000\Parts\_Caps.mdb ----- Page: 1 --  
  
1: 0.0001PF.PRT          0.0001pf Capacitor  
2: 0.0001UF.PRT          0.0001uf Capacitor  
3: 0.00047UF.PRT         0.00047uf Capacitor  
4: 0.0015PF.PRT          .0015pf Capacitor  
5: 0.0015UF.PRT          .0015uf Capacitor  
6: 0.001PF.PRT           .001pf Capacitor  
7: 0.001UF.PRT           .001uf Capacitor  
8: 0.0022PF.PRT          .0022pf Capacitor  
9: 0.0022UF.PRT          .0022uf Capacitor  
10: 0.0027PF.PRT         .0027pf Capacitor  
11: 0.0027UF.PRT         .0027uf Capacitor  
12: 0.0033PF.PRT         .0033pf Capacitor  
13: 0.0033UF.PRT         .0033uf Capacitor  
14: 0.0047PF.PRT         .0047pf Capacitor  
15: 0.0047UF.PRT         .0047uf Capacitor  
16: 0.015PF.PRT          .015pf Capacitor  
17: 0.015UF.PRT          .015uf Capacitor  
18: 0.01PF.PRT           .01pf Capacitor  
19: 0.01UF.PRT           .01uf Capacitor  
20: 0.022PF.PRT          .022pf Capacitor  
21: 0.022UF.PRT          .022uf Capacitor  
22: 0.027PF.PRT          .027pf Capacitor
```

In FILE select Print

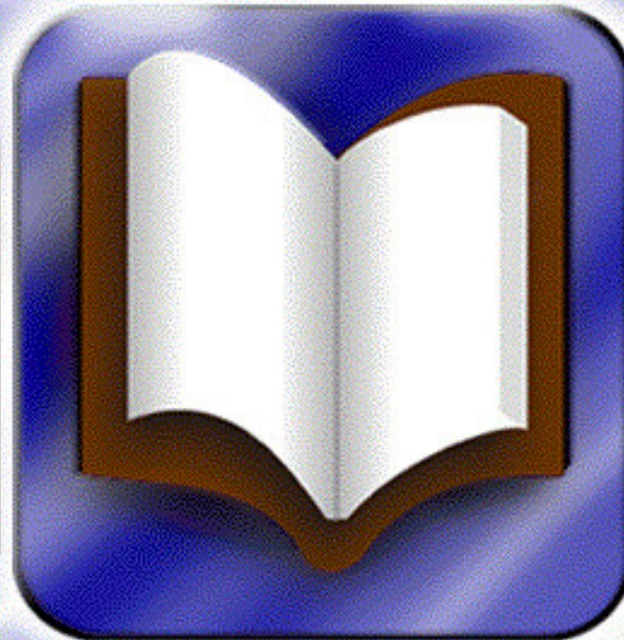


# ClickBook



Copyright © 1995-2001 Blue Squirrel.

686 E. 8400 South  
Sandy, Utah 84070  
(801) 352-1551 Sales: 1-800-403-0925  
E-mail: [sales@bluesquirrel.com](mailto:sales@bluesquirrel.com)  
WWW: <http://www.bluesquirrel.com>



B L U E  S Q U I R R E L

**Untitled - ClickBook**

File Layouts View Tools Help

Open Save Print Options Temp + Page Help Layout? Template About

**Print Status**

Printer : Lexmark Z53 Series ColorFine

All Pages Received : 2 Pages

**Print Range**

All  Pages:

Enter page numbers and/or page ranges separated by commas. Example: 1,3,5-12

Apply

**Print Jobs**

Title	Pages
<input checked="" type="checkbox"/> caps.txt - Notepad	2

**Print**

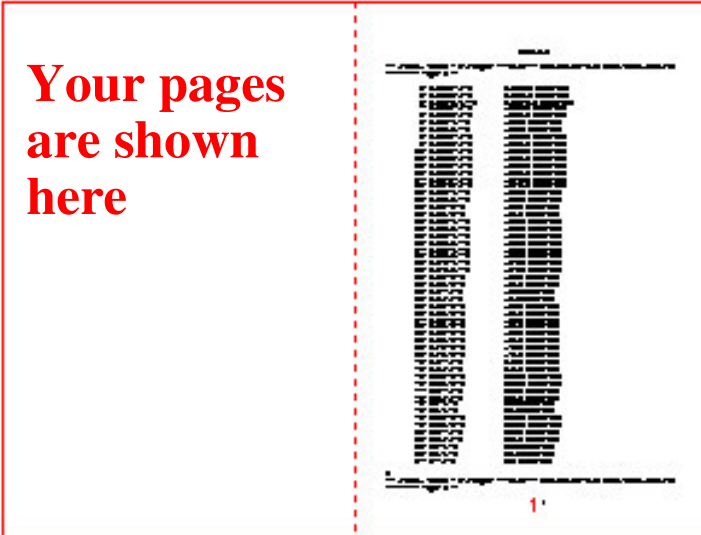
Num of copies:

Front

Back

Sheet Selection

**Your pages are shown here**



Sheet #1 (front)

Categories: All

Layouts:  Side-By-Side (folded)

**Follow the paper moving instructions for your printer and your new book is printed. You will need to buy a extra long stapler so you can finish the book.**

**I hope this has been helpful. Please email me if you need more information on this or for other operations.**

**Thank you  
Bill Jenkins  
wrj60@telus.net**